

Pressure Switch Electronic

for relative pressure 0 ... 145 psi (0...10 bar)

- Pressure switch and gauge
- Smart intelligent Sensor
- Light weight and space saving Design
- Two Switchpoints programmable
- Hysteresis or Comparator Mode Operation
- Programmable Pressure Units (psi, bar, Mpa)
- Rotatable LED-Display
- LED Switching Status Indication
- Very Fast Switching – less than 2,5 ms
- Advanced Functions:
 - Programmable delays to 180 seconds
 - Access code prevents tampering



GENERAL DATA

| | |
|-----------------------------|--|
| Pressure Range | 0 ... 145 psi (0...10 bar), relative to ambient pressure |
| Pressure Units programmable | psi, bar, Mpa, special on request |
| Fluid | Filtered compressed air, lubricated or unlubricated, neutral gases |
| Operating Voltage | 10,8 VDC - 30 VDC ± 10 % (Short-circuit protected) |
| Digital Output | 2 x PNP sourcing type transistor, 125 mA per output Set-/ Reset Points programmable 0 – 100% FS |
| Switching Frequency | 200 Hz |

MECHANICAL DATA

| | |
|-------------------------|---|
| Weight | 25 g |
| Electrical Connection | M8 x 1 - 4 pin |
| Port | G 1 /8" male & M5 female, 1/8" NPT male & M5 female, flange (accessory) |
| Material Housing / Port | Plastic ABS-PC / Messing nickel-plated |

ORDERING INFORMATION

| | |
|-------------|--|
| Name | Sensor pico PSPDD pressure |
| Part Number | 250 02 050 (G 1 /8" male & M5 female) 250 02 051 (1 /8" NPT male & M5 female) |



ELECTRICAL DATA

| | |
|-------------------------------|---|
| Operating Voltage | 10,8 VDC - 30 VDC ± 10 % (Short-circuit protected) |
| Current Consumption | 30 mA |
| Display Panel / Keypad | Bright 3-digit LED Display, LED-status indicator for each output, Keypad access protection prevents tampering |
| Repeat accuracy | 0.2% of measured value |
| Ambient Temperature Influence | 3% of measured value at 0 to 50°C |
| Test voltage | 1000 VDC 1 min |
| Insulation resistance | >100 M at 500 VDC |
| Protection class | SELV |

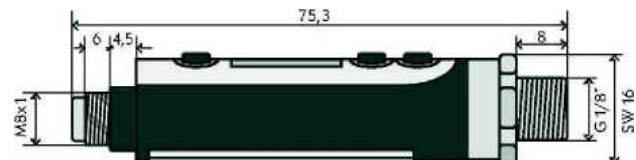
ENVIRONMENTAL

| | |
|-------------------------------|--|
| Mounting | Arbitrary |
| Max. Excess Pressure | 16 bar |
| Degree of Protection | IP 65 |
| Material Housing / Port | Plastic ABS-PC / Messing nickel-plated |
| Electromagnetic Compatibility | Adheres to DIN EN 50081-1 / DIN EN 50082-2 |
| Shock Resistance | 10G XYZ |
| Vibration Resistance | 10 to 55 Hz, 1.5 mm, XYZ 2 hours |

WIRING

| PIN | WIRING | CABLE | PLUG |
|-----|--------|-------|------|
| 1 | Ub+ | brown | |
| 2 | OUT 2 | white | |
| 3 | 0V | blue | |
| 4 | OUT 1 | black | |

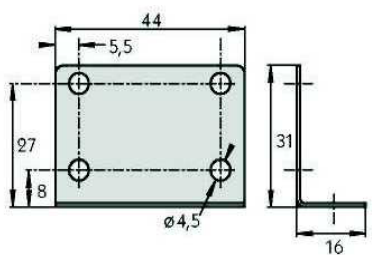
DRAWING



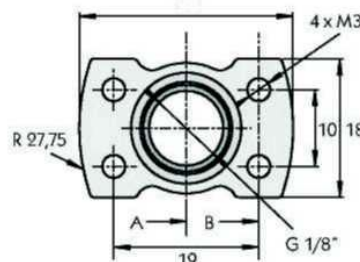
ACCESSORY

| | | |
|-------------------|---|------------|
| Cable | 5 meter with axial plug M8 x 1 | 110 26 310 |
| Cable | 5 meter with radial plug M8 x 1 | 110 26 300 |
| Mounting Material | Flange Adapter incl. O-Ring and bracket | 080 40 610 |
| Mounting Material | Flange adapter incl. O-Ring | 080 41 730 |

Fixing Bracket



Adapter Flange



Cable M8 x1

